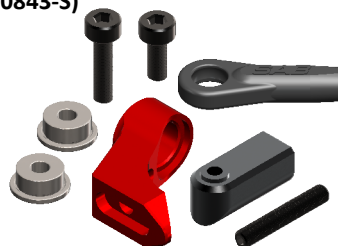


SPARE PARTS

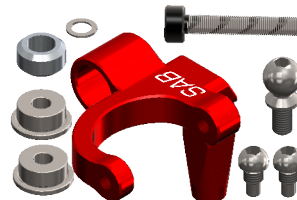
Tail Blade Grip (H0772-S)



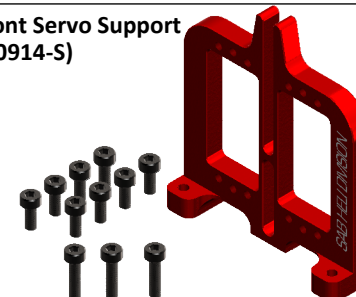
Blade Grip Arm (H0843-S)



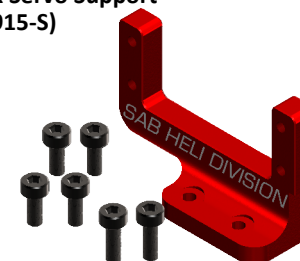
Bell Crank Lever (H0911-S)



Front Servo Support (H0914-S)



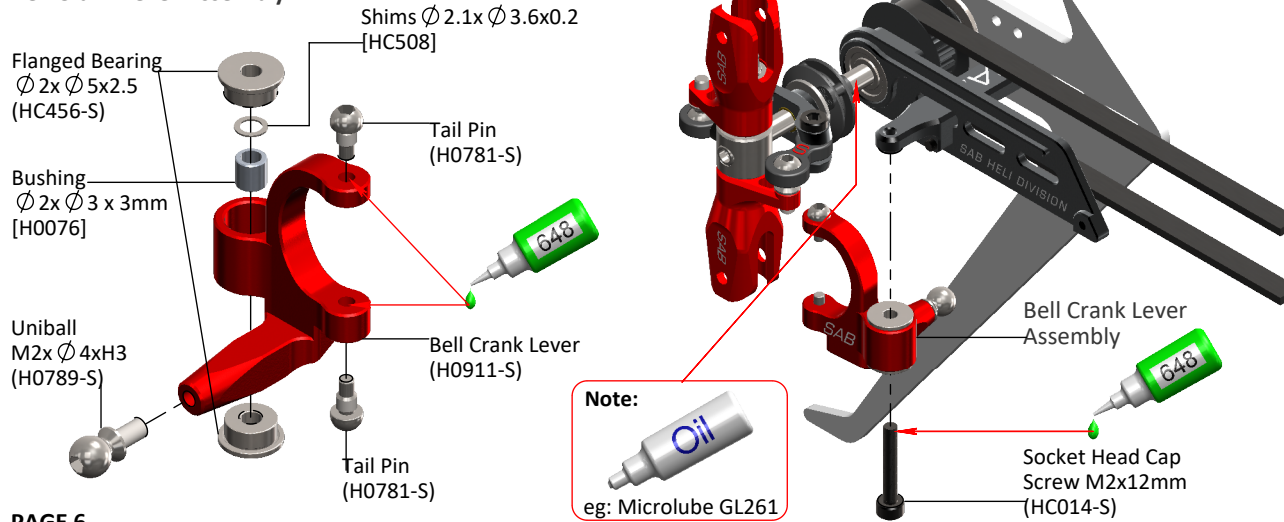
Back Servo Support (H0915-S)



Please read this user manual carefully, it contains instructions for the correct assembly of the KIT.
Please refer to the website www.goblin-helicopter.com for updates and other important information. Thanks You.

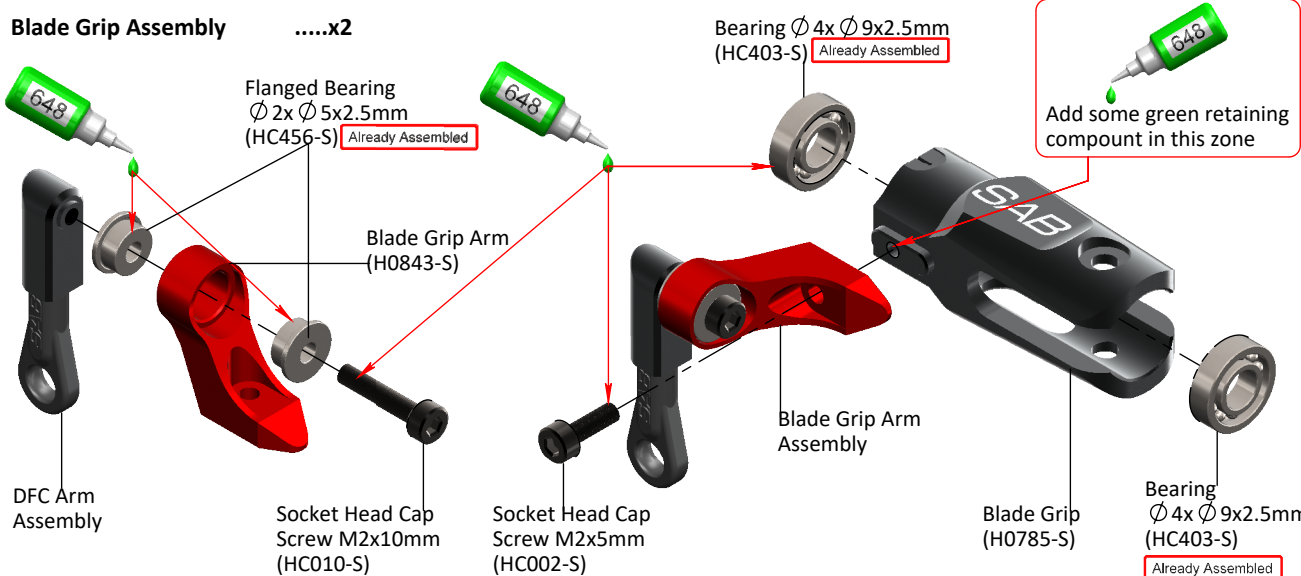
In this sheet, you can see how to assemble the specific parts of the "Mini-Comet" version.

Bell Crank Lever Assembly

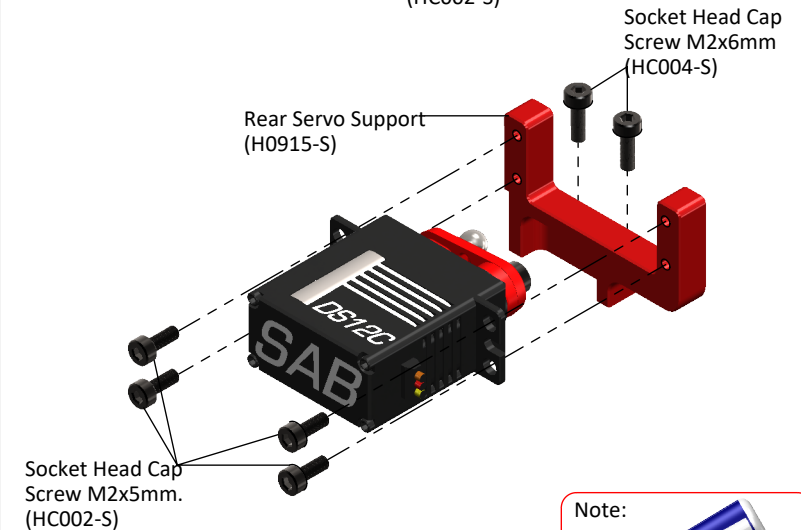
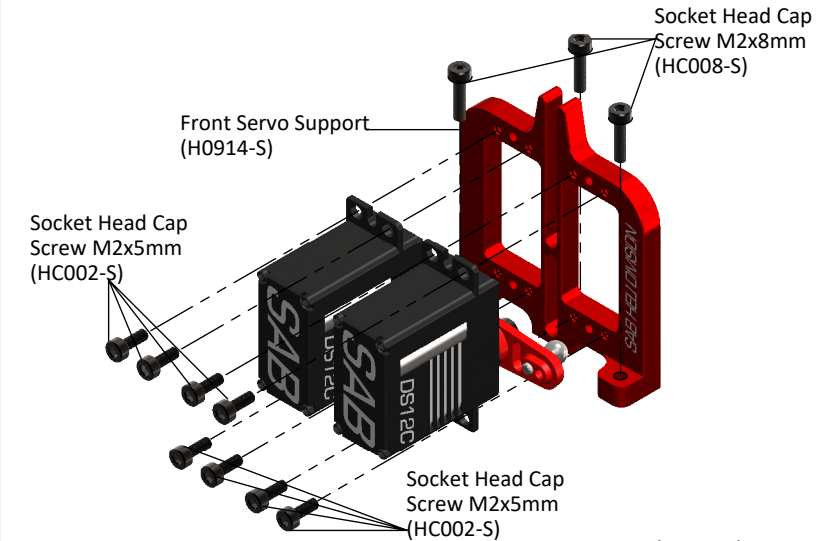


PAGE 6

Blade Grip Assemblyx2



PAGE 17



Note: Use Loctite in all Screw.

PAGE 13